

TEST CONDITIONS

Test Date	6/14/2022
Test Conductor	Travis Hayes
Boat Weight as Tested (lbs)	21450
Air Temperature (degrees F)	92
Elevation (ft)	0
Sea State	Calm
Wind Velocity range (mph)	5
Fresh/Salt Water	Brackish
Fuel Level at Testing (gal)	200

ENGINE SPECIFICATIONS

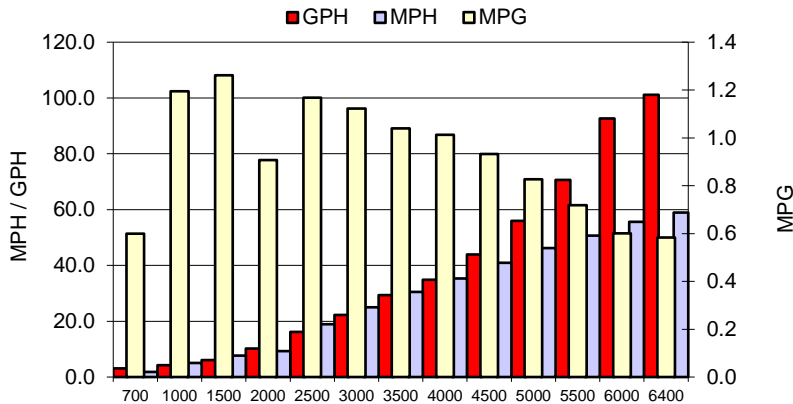
Number of Engines	2
Engine	V12 Verado
Horsepower	600
Cylinders	12
Drive or gear model and ratio	V12 AMS 2.50
Mounting Bolt Hole	2,2
Engine Height (in)	2.5,2.5
Engine Setback (in)	20.0,20.0
Engine Length (in)	25,25

PERFORMANCE SUMMARY

Top Speed (mph @ rpm)	59.2	6426
Acceleration 0 - 20 mph (seconds)	4.16	
Acceleration 0 - 30 mph (seconds)	6.36	

PROPELLER SPECIFICATIONS

Mercury Name	Verado 12
Material	Stainless Steel
Pitch	28.0,28.0
Number of Blades	4/3

PERFORMANCE CURVE

BOAT SPECIFICATIONS

Region/s sold	
Manufacturer	MJM
Website	
Boat Model	4
Boat Type	Sport Yacht/Yacht
Material	Adv Composite
Length (ft)	46.7
Beam (ft)	12
Max hp Capacity	Yacht
Fuel Tank Capacity (gal)	475
Steering Type	Joystick
Dry Boat Weight (lbs)	17730

PERFORMANCE DATA

RPM	SPEED	FUEL CONSUMPTION	FUEL CONSUMPTION	RANGE
RANGE	MPH	GPH	MPG	MILES
700	1.9	3.1	0.6	285
1000	5.0	4.2	1.2	568
1500	7.7	6.1	1.3	599
2000	9.3	10.2	0.9	431
2500	18.9	16.2	1.2	555
3000	25.0	22.3	1.1	533
3500	30.5	29.4	1.0	494
4000	35.3	34.9	1.0	481
4500	40.9	43.9	0.9	443
5000	46.3	55.9	0.8	393
5500	50.7	70.6	0.7	341
6000	55.6	92.6	0.6	285
6400	58.9	101.2	0.6	277
0	0.0	0.0	0.0	0

This data is internal to Brunswick.