

TEST CONDITIONS

Test Date	1/15/2019
Test Conductor	thayes3
Boat Weight as Tested (lbs)	18,500
Air Temperature (degrees F)	32
Elevation (ft)	0
Sea State	Calm
Wind Velocity range (mph)	3
Fresh/Salt Water	Saltwater
Fuel Level at Testing (gal)	540

ENGINE SPECIFICATIONS

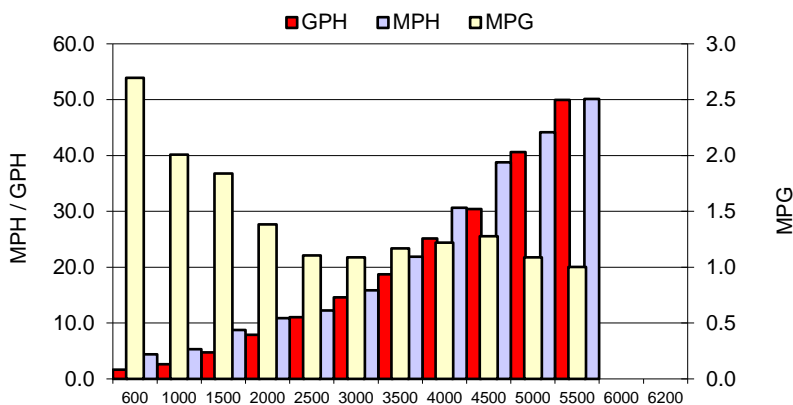
Number of Engines	3
Engine	300 V8 Verado
Horsepower	300
Cylinders	8
Drive or gear model and ratio	HD Camber 1.75
Mounting Bolt Hole	2
Engine Height (in)	6.25
Engine Setback (in)	14
Engine Length (in)	25,30,25

PERFORMANCE SUMMARY

Top Speed (mph @ rpm)	51.7	5694
Acceleration 0 - 20 mph (seconds)	5.16	
Acceleration 0 - 30 mph (seconds)	9.36	

PROPELLER SPECIFICATIONS

Mercury Name	Enertia ECO
Material	Stainless Steel
Diameter/Pitch	16 X 19
Number of Blades	3

PERFORMANCE CURVE

BOAT SPECIFICATIONS

Region/s sold	
Manufacturer	MJM Yachts
Website	
Boat Model	43z
Boat Type	Sport Yacht
Material	Fiberglas
Length (in)	46
Beam (in)	12
Max hp Capacity	350
Fuel Tank Capacity (gal)	540
Steering Type	JPO
Dry Boat Weight (lbs)	17500

PERFORMANCE DATA

RPM	SPEED	FUEL CONSUMPTION	FUEL CONSUMPTION	RANGE
RANGE	MPH	GPH	MPG	MILES
600	4.4	1.6	2.7	0
1000	5.3	2.7	2.0	0
1500	8.8	4.8	1.8	0
2000	10.9	7.9	1.4	0
2500	12.2	11.1	1.1	0
3000	15.9	14.6	1.1	0
3500	21.9	18.8	1.2	0
4000	30.7	25.2	1.2	0
4500	38.8	30.4	1.3	0
5000	44.2	40.6	1.1	0
5500	50.1	49.9	1.0	0
6000	0.0	0.0	0.0	0
6200	0.0	0.0	0.0	0