

**TEST CONDITIONS**

Test Date	1/6/2021
Test Conductor	thayes3
Boat Weight as Tested (lbs)	31892
Air Temperature (degrees F)	43
Elevation (ft)	0
Sea State	Slight
Wind Velocity range (mph)	10 to 15
Fresh/Salt Water	Saltwater
Fuel Level at Testing (gal)	290

**ENGINE SPECIFICATIONS**

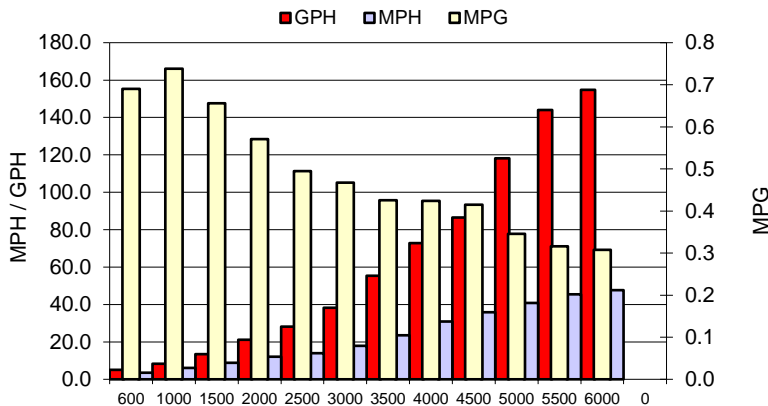
Number of Engines	4
Engine	V8 Verado
Horsepower	300
Cylinders	8
Drive or gear model and ratio	HD Camber 1.85
Mounting Bolt Hole	2,2,2,2
Engine Height (in)	Not Measured
Engine Setback (in)	Not Measured
Engine Length (in)	20,30,30,20

**PERFORMANCE SUMMARY**

Top Speed (mph @ rpm)	48.2	5824
Acceleration 0 - 20 mph (seconds)	5.07	
Acceleration 0 - 30 mph (seconds)	8.95	

**PROPELLER SPECIFICATIONS**

Mercury Name	Enertia ECO XP
Material	Stainless Steel
Pitch	17.5,17.5,17.5,17.5
Number of Blades	3

**PERFORMANCE CURVE**

**BOAT SPECIFICATIONS**

Region/s sold	
Manufacturer	MJM
Website	
Boat Model	53z
Boat Type	Sport Yacht/Yacht
Material	Fiberglass
Length (ft)	56.2
Beam (ft)	15
Max hp Capacity	Yacht
Fuel Tank Capacity (gal)	920
Steering Type	Joystick
Dry Boat Weight (lbs)	29536

**PERFORMANCE DATA**

RPM	SPEED	FUEL CONSUMPTION	FUEL CONSUMPTION	RANGE
RANGE	MPH	GPH	MPG	MILES
600	3.5	5.1	0.7	635
1000	6.2	8.3	0.7	679
1500	8.9	13.5	0.7	603
2000	12.1	21.1	0.6	525
2500	14.0	28.2	0.5	455
3000	17.9	38.3	0.5	430
3500	23.6	55.3	0.4	392
4000	30.9	72.9	0.4	390
4500	35.9	86.5	0.4	382
5000	40.9	118.1	0.3	318
5500	45.5	144.0	0.3	291
6000	47.6	154.8	0.3	283
0	0.0	0.0	0.0	0
0	0.0	0.0	0.0	0

This data is internal to Brunswick.